

Customizing **pcvisit EasySupport**



Your corporate design for your pcvisit application

Every enterprise is unique. Therefore, we offer you the possibility to adapt the surface of your pcvisit EasySupport application to match your corporate identity. Use our graphics set as a template to create your own stylized pcvisit module and Startscreen with the graphics program of your choice.

The following graphics programs can be used for editing:

Commercial software

- Adobe Photoshop: www.adobe.com/products/photoshop/photoshop?
- Corel Draw: www.corel.com/servlet/Satellite/de/de/Product/1181657927054

Freeware

- GIMP: www.gimp win.sourceforge.net

Table of contents:

1. Contents of the customizing kit
2. Separation of the graphics template
 - 2.1 Sections
 - 2.2 Button and status items section
 - 2.3 Background colour of the text and banner areas
 - 2.4 Main module graphics section
 - 2.5 Banner graphic section
3. Customization steps
 - 3.1 Graphic editing
 - 3.2 Review changes to graphics
 - 3.3 Send graphics
4. Good examples of customizing

1. Contents of the customizing kit

The customizing kit contains a graphics set and relevant application modules needed for testing. Save these files in a common folder.

The graphics set consists of a graphics template (**SkinsColor_Advisor3**) which is available in two different formats. Before editing, you can choose between the bitmap format (**SkinsColor_Advisor3.bmp**) and (Adobe) Photoshop format (**SkinsColor_Advisor3.psd**).

Use the .bmp file if you want to make simple changes. You can work on the template with any graphics program which is compatible with the .bmp format. Bmp graphic editing is on one flat level whereby all changes you make (e.g. brightness/contrast adjustments) are carried out consistently through the entire program.

Use the .psd file if you want to do more complex or advanced graphic editing. You can work on the template with any graphics program that is compatible with the .psd format. The .psd file contains a greater level of depth which separates individual graphics categories. Any changes you make will not automatically create a default setting throughout the module.

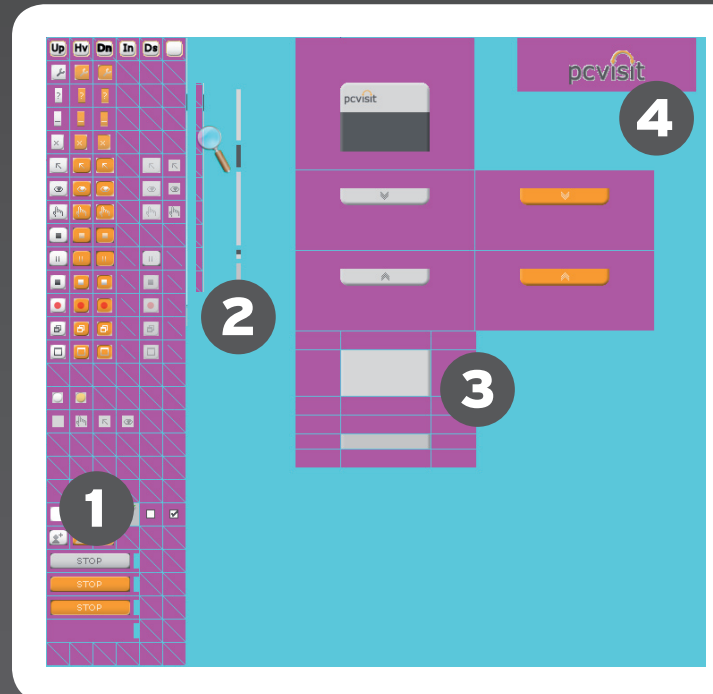


2. Separation of the graphics template

2.1. Sections

The graphics template is divided into four different parts:

1. Button and status items section
2. Background colour section for text and banner areas
3. Main module section
4. Banner section



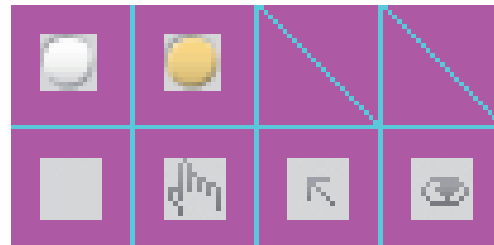
2.2. Buttons and status items section

The column headings, which have been abbreviated, are arranged to show the behaviour of the button graphics in the module.

- UP (UP): When the button is in the normal position
- Hv (Hover): When the pointer of mouse is over the button
- DN (down): When the button is in the pressed position
- DS (Disabled): When the button is deactivated and is unusable



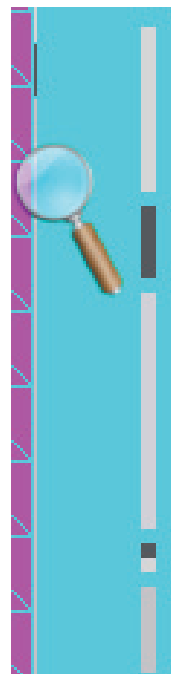
The buttons are arranged by behaviour and are always in a line. The status items are used to indicate information such as the connection status bar, etc. and can also be adapted individually within this section.



2.3. Background colour of the text and banner areas

This area can be found next to the the button and status item section and controls background colour within the text areas and in the banner. The background colour section is divided into five areas:

1. Background for the banner graphic
2. Background for the dividing strip directly under the banner (where the version number is displayed)
3. Unused colour sections.
4. Background of the text areas in the main module
 - 4.1 Upper colour pixels (background of the connection number)
 - 4.2 Lower colour pixels (background of the remaining text)
5. Background of the text within the fold-down menu section.



2.4 Main module graphics section

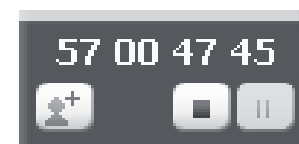
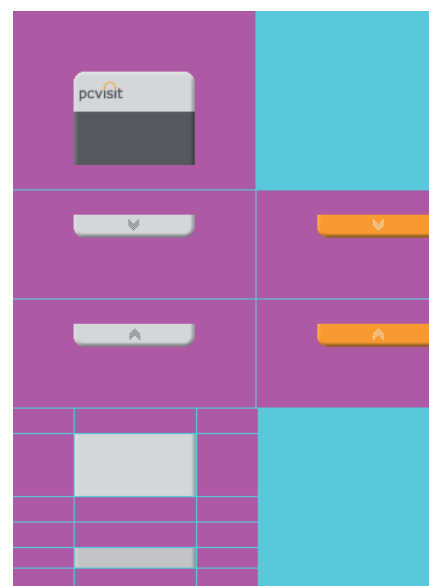
This section consists of the module's graphic panels. The button and status items along with the text cannot be rearranged and their positions remain fixed. The panels can be adapted by height and width and repositioned within the magenta-coloured area.

You cannot change the colour of the text in the graphics template, but we can do that on your behalf. Include a note with any further changes that you require when you return your customizations and we will work on it immediately.

You can request colour adjustments to the following text:

- The connection number
- All additional text

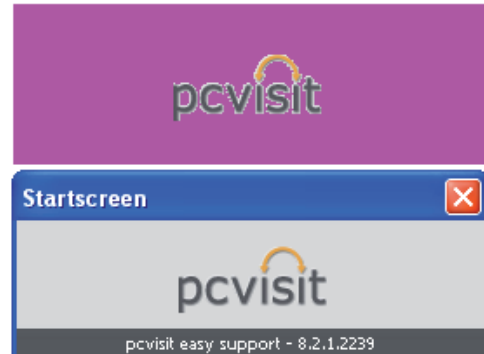
The colour information should consist of either the RGB or hexadecimal colour value systems.



2.5. Banner graphic section

This section can also be individually adapted and arranged. The changes you can make in this section of the template relate to the banner graphic area on the pcvisit Startscreen.

You can specify the background colours of the banner in the background colour section (see item 2.3).



3. Customization Steps

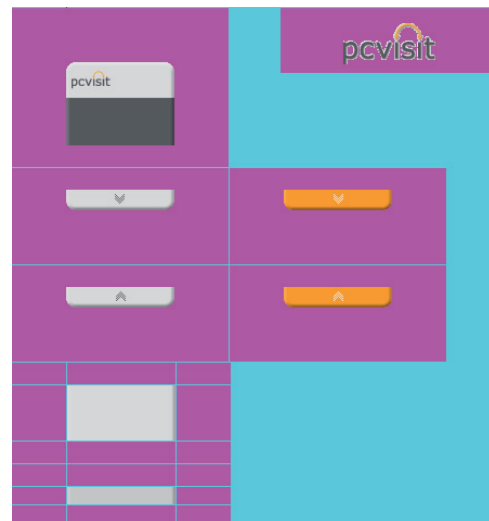
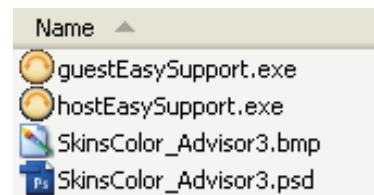
3.1 Graphic editing

You will need the customizing kit which can be sent to you via email. The kit contains a graphics set (SkinsColor_Advisor3) and the application modules needed for testing. Save these files in a common folder.

You can adapt the colours of the module panels at will and the entire magenta area up to the cyan (turquoise) border is available to use.

Please note that during treatment of the graphics, the size of the surrounding square as well as its position cannot be changed. The magenta area is used as a transparency colour which will not mix with the panel graphics.

When you have made all of your changes, save your revised graphic template in the .bmp format.



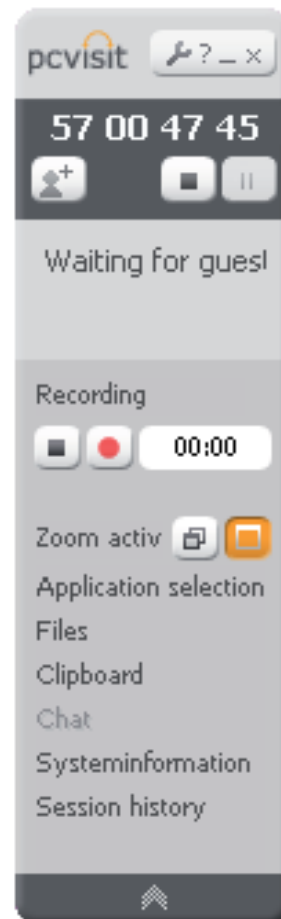
3.2 Review changes to graphics

You can review your changes during editing with the provided links ([gastgeber.exe](#)/[pcvisit.exe](#)).

3.3 Send Graphics

When you have made all of your changes, send us your graphics work by email to customization@pcvisit.de.

As soon as we receive your graphics, we will provide you with your fully customized version of pcvisit within two weeks.



4. Good examples of customizing

